

# Technical Bulletin

Bulletin Number: 410 Revision Number: R-06Release Date: March 20, 1991 Revision Date: December 16, 1999**SUBJECT:** UNIVERSAL CASTER KIT**MODELS AFFECTED:** All models.**REASON:** To provide a kit which allows casters to be mounted to Dixie-Narco venders.***NOT SUBMITTED TO REGULATORY AGENCIES FOR REVIEW OR APPROVAL.*****KIT #1 (Part Number: 491,010,20x.x4)**

Contents:

KIT #	ITEM #	NAME	PART NUMBER	QTY.
1	1	Caster-5/8" with brake	801,503,22x.x1	2
	2	Caster-5/8" without brake	801,503,21x.x1	2
	3	Nut-5/8" (front only)	900,301,79x.x1	2

**KIT #2 (Part Number: 432,015,10x.x4)**

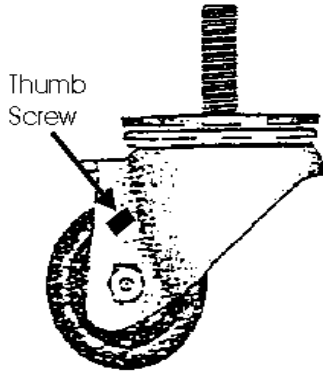
Contents:

KIT #	ITEM #	NAME	PART NUMBER	QTY.
2	7	Caster-1/2" with brake	801,503,24x.x1	2
	8	Caster-1/2" without brake	801,503,23x.x1	2
	9	Nut-1/2" (front only)	901,001,08x.x1	2

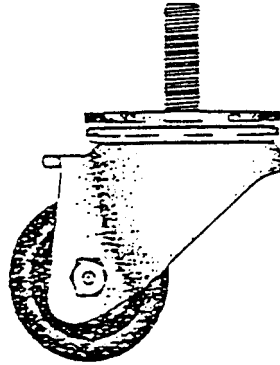
**Important:** On venders serialized 0001-3128BN to 0001-6006DO you will also need to order:

2 - 491,010,02x.x3	Caster Support -B
2 - 491,010,03x.x3	Caster Support -A
4 - 803,200,27x.x1	Spacer

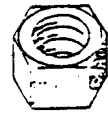
# CONTENT VIEWS



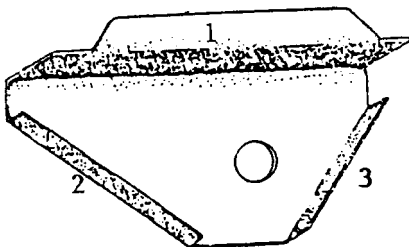
**CASTER WITH BRAKE**  
Item 1 or 7



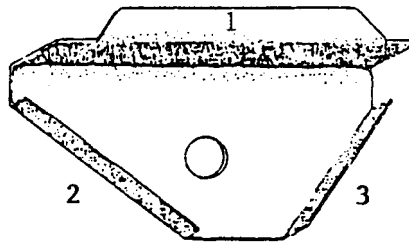
**CASTER WITHOUT SUPPORT**  
Item 2 or 8



**NUT**  
Item 3 or 9



**CASTER SUPPORT - A**  
Item 5



**CASTER SUPPORT -B**  
Item 4



**SPACER**  
Item 6

## ITEMS NUMBERS REQUIRED INDICATED BY AN "X"

	ITEM NUMBERS									
BASE CONFIGURATION (Pg. 4)	1	2	3	4	5	6		7	8	9
BASE A - Sept. 1974 to Oct. 1986	-	-	-	-	-	-		X	X	X
BASE B - Oct. 1986 to July 1989	X	X	X	-	-	-		-	-	-
BASE C - July 1989 to Feb. 1991	X	X	X	X	X	X		-	-	-
BASE D - Feb. 1991 to Present	X	X	X	-	-	-		-	-	-

## READ INSTRUCTIONS THOROUGHLY BEFORE INSTALLING

**WARNING: EXERCISE EXTREME CAUTION WHEN HANDLING VENDER. TILTING, LAYING ON BACK, OR RAISING THE VENDER CAN CAUSE SERIOUS INJURY.**

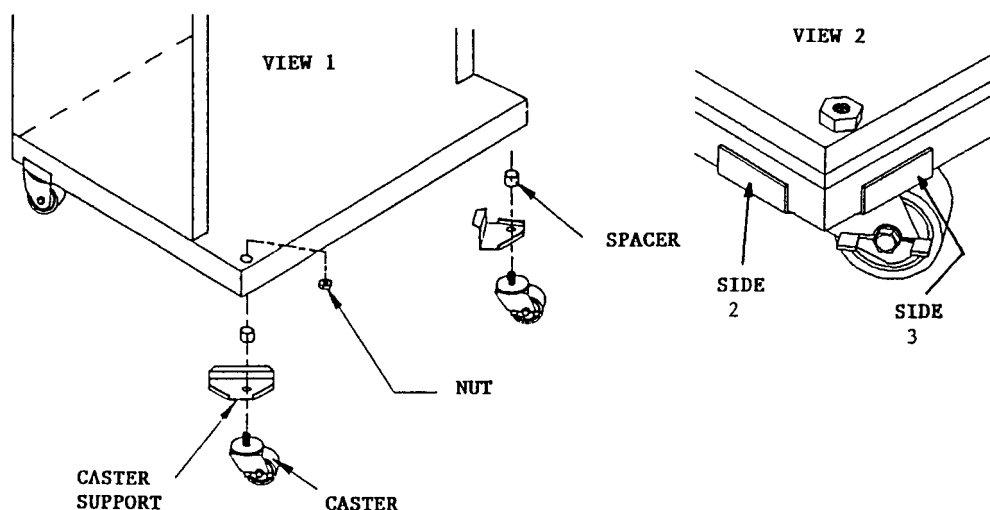
1. The vender should be empty of all product to allow it to be tilted, laid on its back or raised to install the kit.
2. Install a spacer, caster support, and caster one corner at a time. Note: Caster supports and spacers are only needed on venders serialized 0001-3128BN to 0001-6006DO.  
NOTE: There is an "A" caster support and a "B" caster support. If the vender has factory installed caster supports, discard caster supports "A" and "B" and the spacers (4) supplied with kit.

**IF INCORRECT CASTER SUPPORT IS USED, HOLE IN CASTER SUPPORT WILL NOT ALIGN WITH BASE NUT. (SEE VIEWS PAGES 1 AND 2.)**

3. When installing the caster support on the front of the vender, place caster support "A" on the hinge side of the cabinet. Install the spacer so it surrounds the clinch nut. While holding in place, install the caster support so the longest side "1" is under the vender and the short sides "2" and "3" are on the outside of the vender base flange. (See View 2 below.) Thread the caster into the existing hole on the underside of the base assembly and tighten securely. Place the caster support "B" on the door roller side of the cabinet in the same manner as caster support "A".

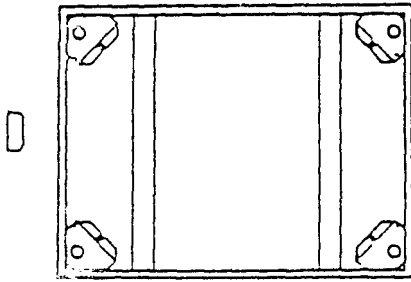
When installing caster supports on the rear of the vender, place caster support "B" on the hinge side of the cabinet. Place caster support "A" on the door roller side of the cabinet in same manner as above.

4. Place the nut (supplied with kit) on the threaded stud of the front casters (with brakes) and tighten securely.
5. If the vender is laid on its back, do not plug in the power cord until after it has sat upright for some time period. This allows the oil to drain back in, if any oil did escape while on its back.



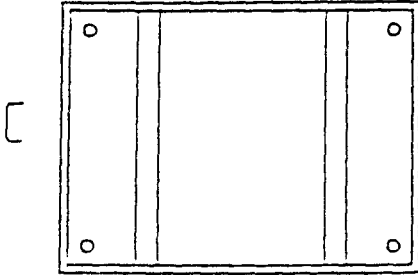
**VENDER BASE CONFIGURATION**  
**(Bottom View)**

(front)



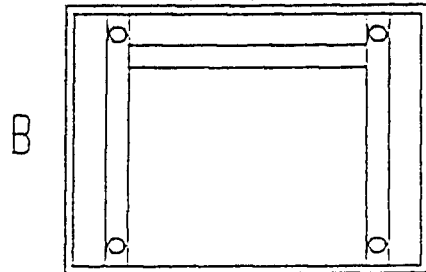
(Feb. 1991 - Present)

(front)



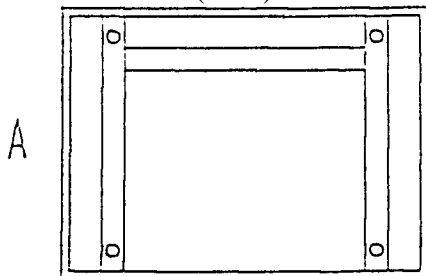
(July 1989 - Feb. 1991)

(front)



(Oct. 1986 - July 1989)

(front)



(Sept. 1974 - Oct. 1986)

**BASE D**

**Serial number 0001-6007AP\* and up.**

Corner gusset, 4 corners

ALL WILLISTON VENDERS

Except following venders: 0 to 500; 2457 to 2484; and 2657 to 2816, also production run 6008AP. All Williston built venders shipped after March 2, 1991 will have factory installed corner gussets regardless of serial number.

Thread size 5/8" - (for leveling legs or casters.)

**BASE C**

**Serial number 0001-3128BN to 0001-6006DO.**

Also, include production runs 3121BN and 3123BN.

Thread size 5/8" - 11 (for leveling legs or casters.)

**BASE B**

**Serial numbers 0001-2947DK to 0001-3127BN.**

Except production run numbers 2948DK, 2956DK, 3121BN and 3123BN.

Thread size 5/8" - 11 (for leveling legs or casters.)

**BASE A**

**Production number 1880001 (1974) to 0001-**

**2946DK.** (The 1880001 style of serialization is obsolete and replaced in 1976 with 0000-0000AA style serialization.) Also, production run numbers 2948DK and 2956DK.

Thread size 1/2" - 13 (for leveling legs or casters.)

Example of Serial Number 0001 - 6007AP Cabinet Product # - Production Run #
---